

The background of the entire image is a dark, monochromatic marbled pattern. It features intricate, swirling veins of light gray and white against a dark charcoal or black base, creating a sophisticated and organic texture.

Completo

Stone Collection

PORCELAIN TILES



Completo

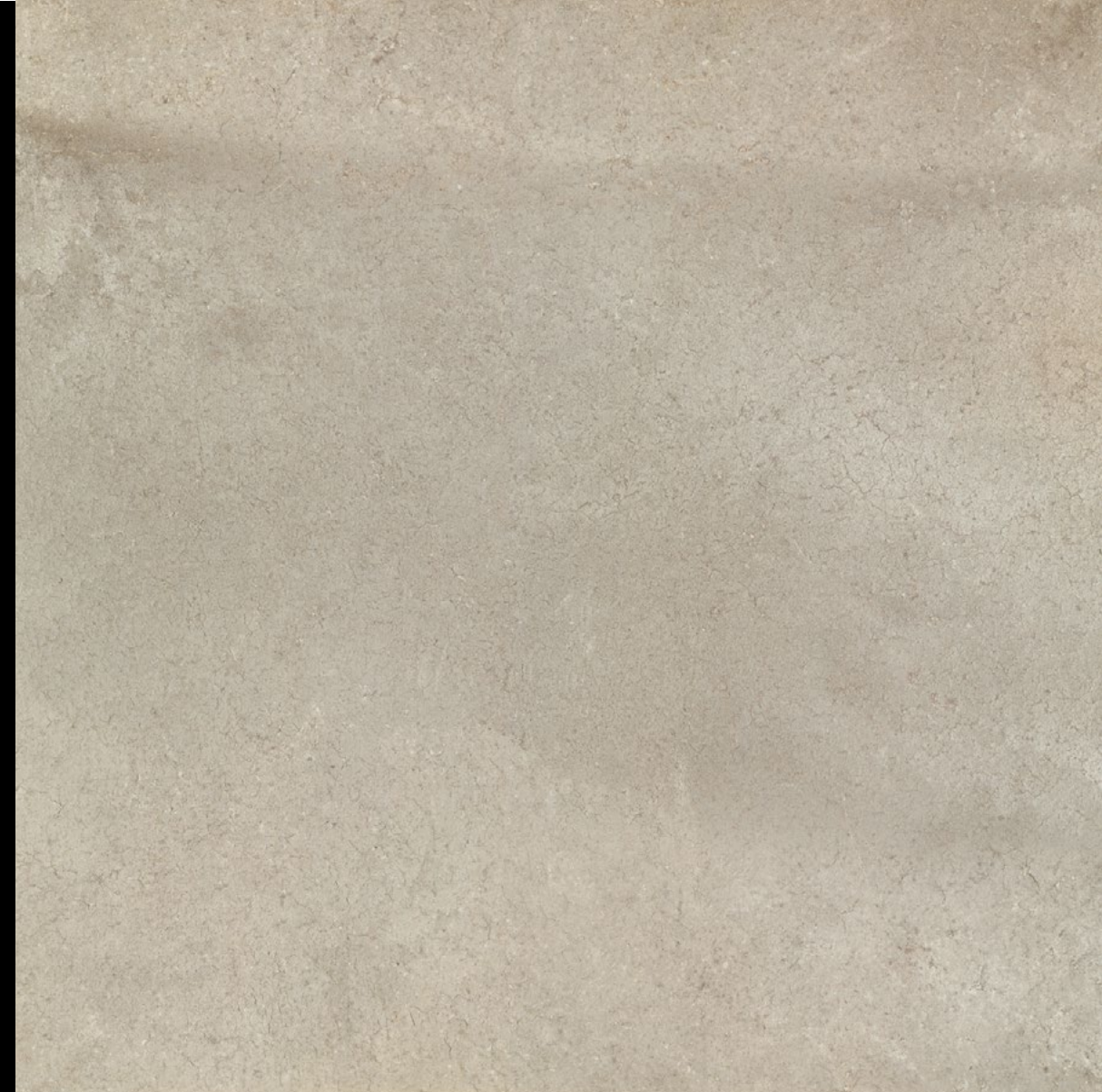
Stone Collection

An award winning collection created by renowned product designer Gordon Guillaumier, this exclusive range is available in four authentic stone shades and four practical formats. This ingenious collection offers something unique for both residential and commercial schemes and with its three finishes, Natural, Grip and Polished, provides interior designers with an unparalleled opportunity for creativity. Guillaumier has combined contemporary colours and delicate textures with a stunning series of innovative decorative pieces and distinct feature tiles. Together these create a huge number of design combinations suitable for an entire development, both inside and out.

4 COLOURS | 4 SIZES | 3 FINISHES



Completo
Amalfi



Completo
Argentario





Completo
Lipari



Completo
Livigno





Facet

Facet is an exciting and innovative decor concept and is available in two colours (Amalfi and Lipari). 600 x 600 mm pieces make up the beautiful inlay pattern shown below. Facet can also be used for a feature wall using the 300 x 600 mm repeat pattern option.



Amalfi Facet 600x600



Amalfi Facet 300x600

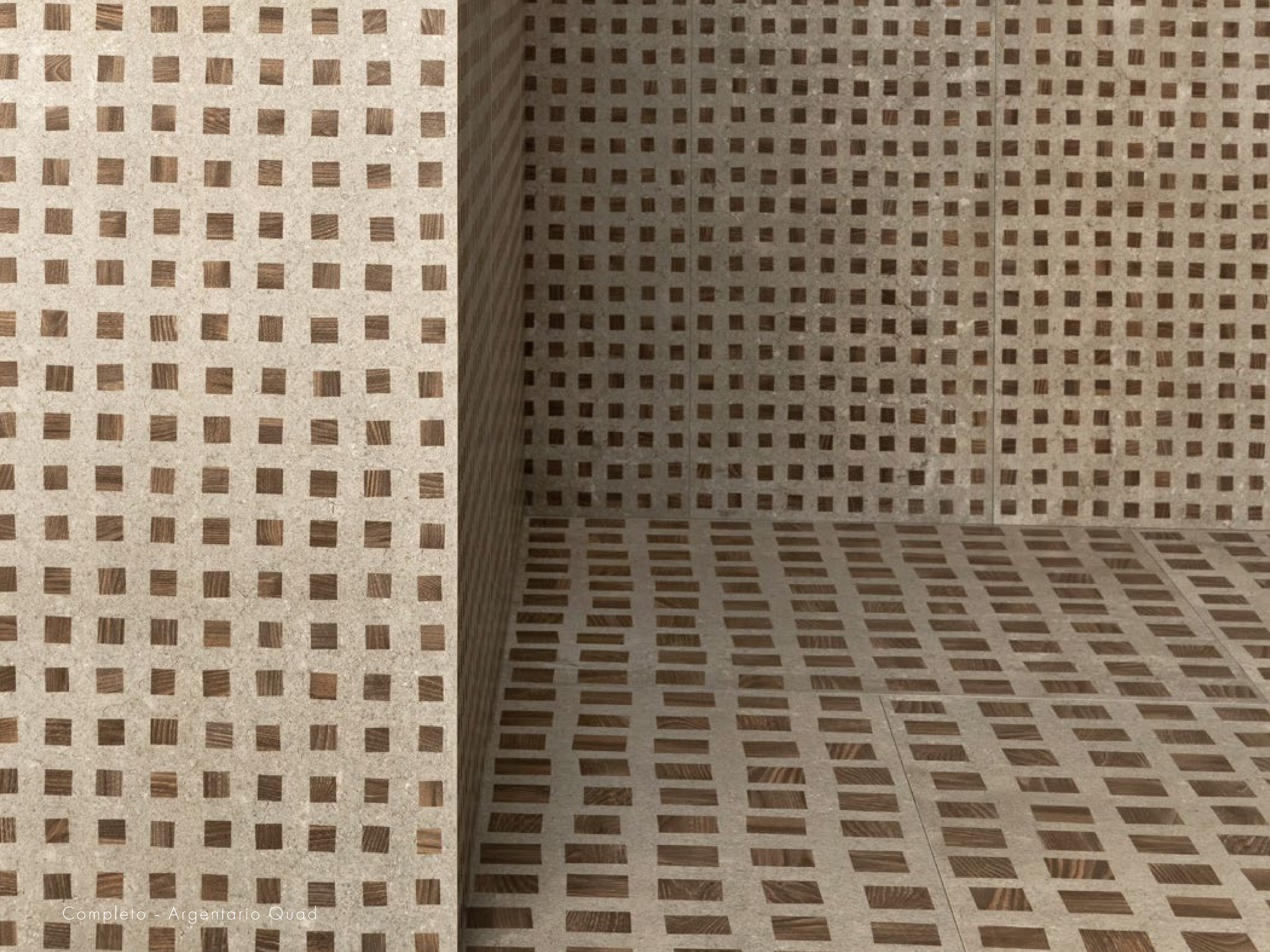


Lipari Facet 600x600



Lipari Facet 300x600

DETAIL	COLOUR	FINISH	SIZE(MM)
Facet	Amalfi Lipari	Natural	600 X 600 X 9.5
Facet	Amalfi Lipari	Natural	300 X 600 X 9.5



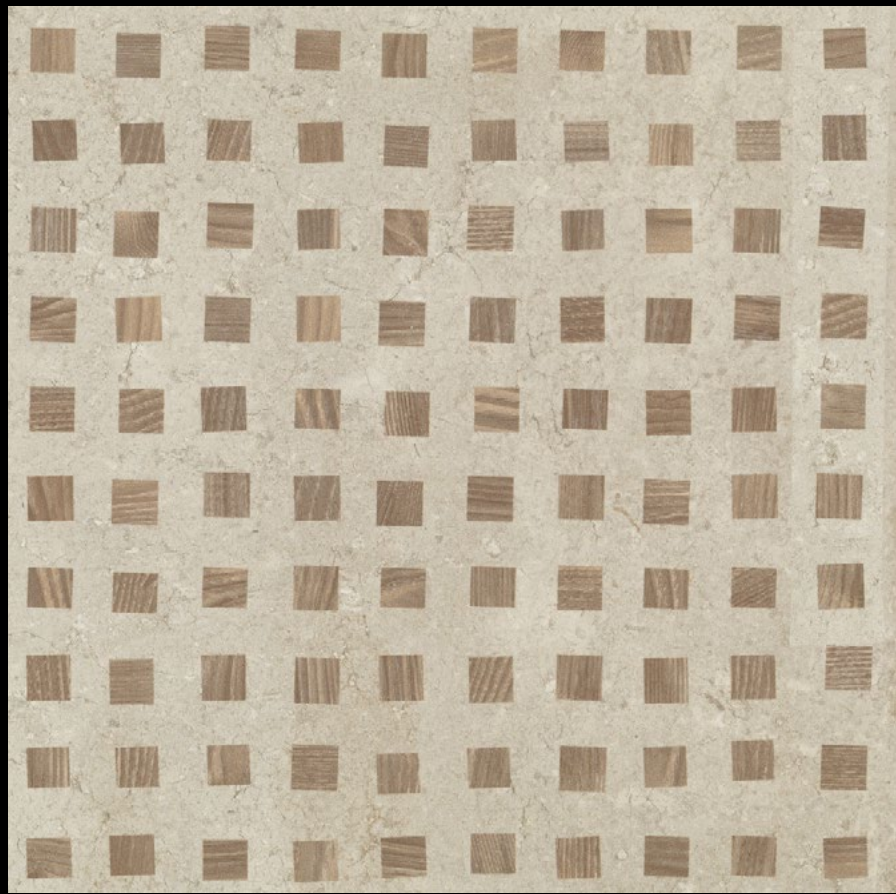
Completo - Argentario Quad

Quad

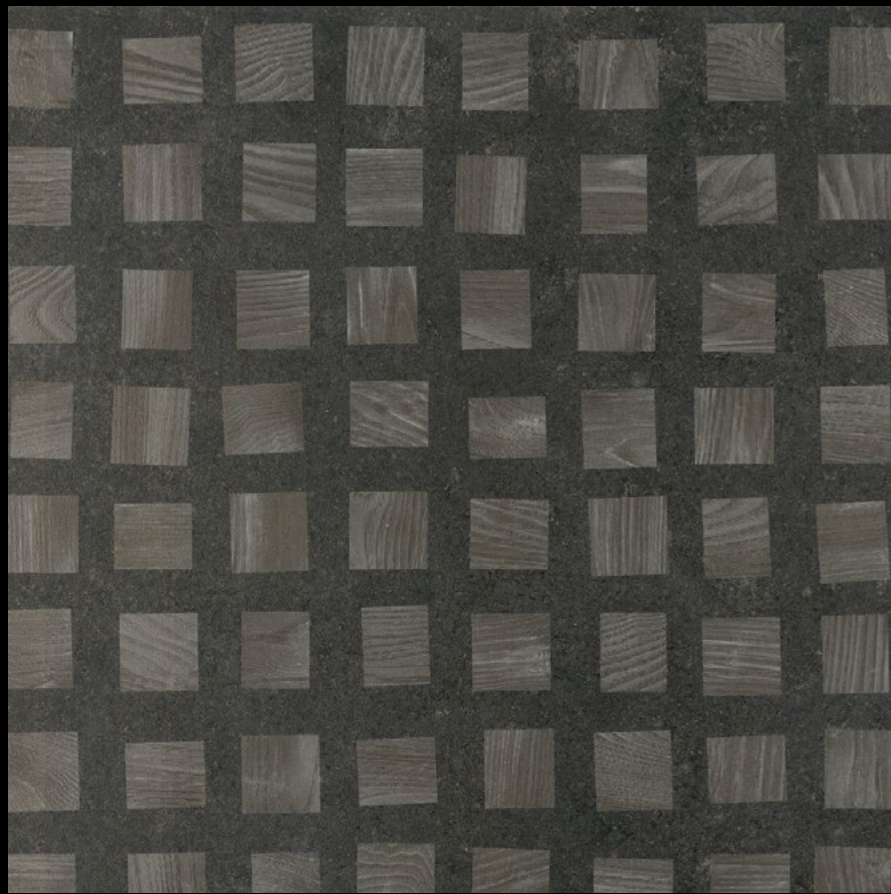
Quad features delicate wood-effect inlays and is available in two colours and two sizes, 600 x 600 mm and 300 x 600 mm (Natural finish).



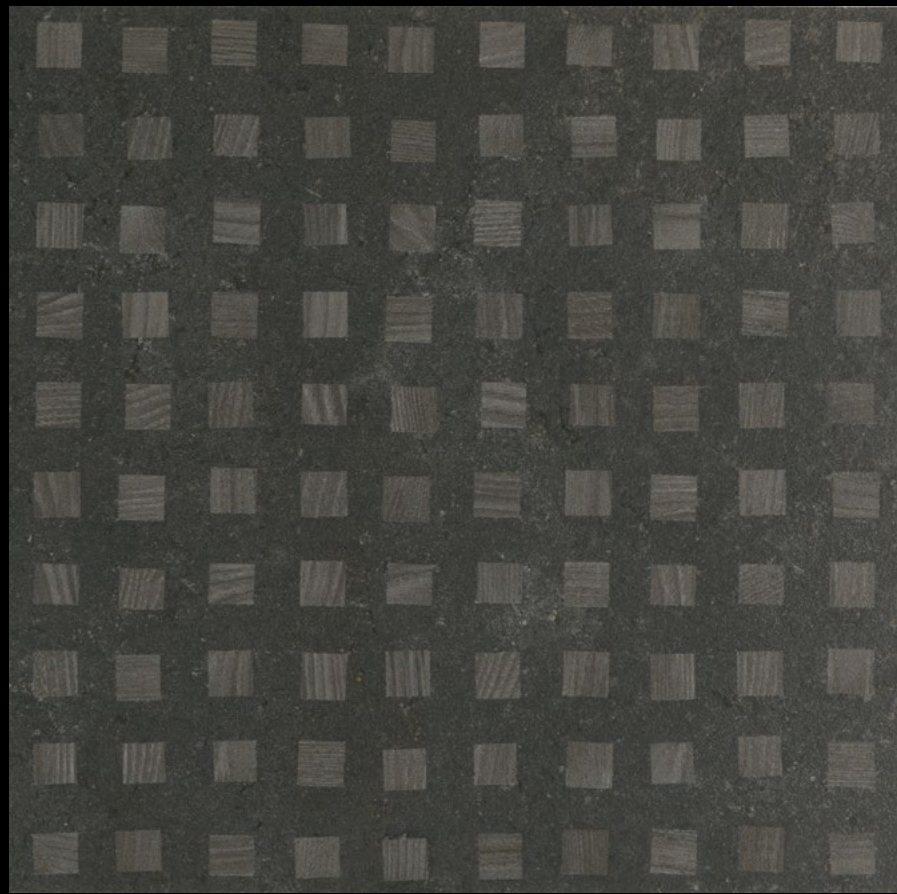
Quad Argentario
600 x 600



Quad Argentario
300 x 600



Quad Livigno
600 x 600



Quad Livigno
300 x 600

DETAIL	COLOUR	FINISH	SIZE(MM)
Quad	Argentario Livigno	Natural	600 X 600 X 9.5
Quad	Argentario Livigno	Natural	300 X 600 X 9.5

Special Pieces



Mosaic Amalfi



Mosaic Argentario



Mosaic Lipari



Mosaic Livigno

COLOUR

Amalfi | Argentario | Lipari
Amalfi | Argentario | Lipari | Livigno
Amalfi | Argentario | Lipari | Livigno
Amalfi | Argentario | Lipari | Livigno
Amalfi | Argentario | Lipari | Livigno
Amalfi | Argentario | Lipari | Livigno

FINISH

Natural
Natural
Natural
Natural
Polished
Natural

SIZE(MM)

65 X 1200 X 10
80 X 800 X 11
300 X 600 X 9.5
80 X 600 X 9.5
80 X 600 X 9.5
300 X 300 X 9.5

DETAIL

Skirting Tile
Skirting Tile
Step Tile - Gradino
Skirting Tile
Skirting Tile
Mosaic

Muretto

Completo is also available in Muretto in two styles Warm and Cold.



Muretto Cold



Muretto Warm

DETAIL	COLOUR	FINISH	SIZE(MM)
Muretto	Cold Warm	Natural	300 X 600 X 9.5



Completo - Muretto Cold

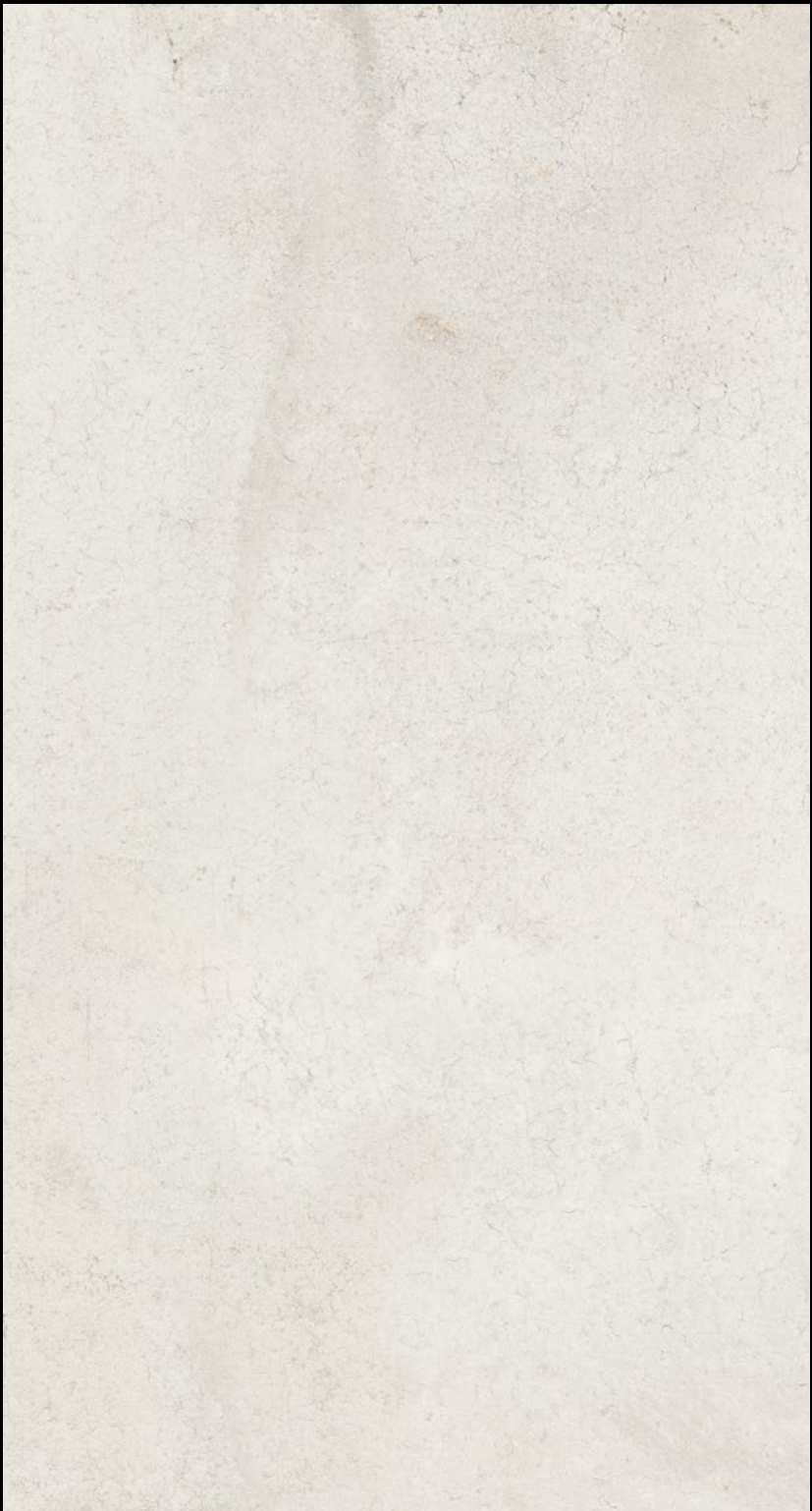
Colours



Amalfi



Argentario



Lipari

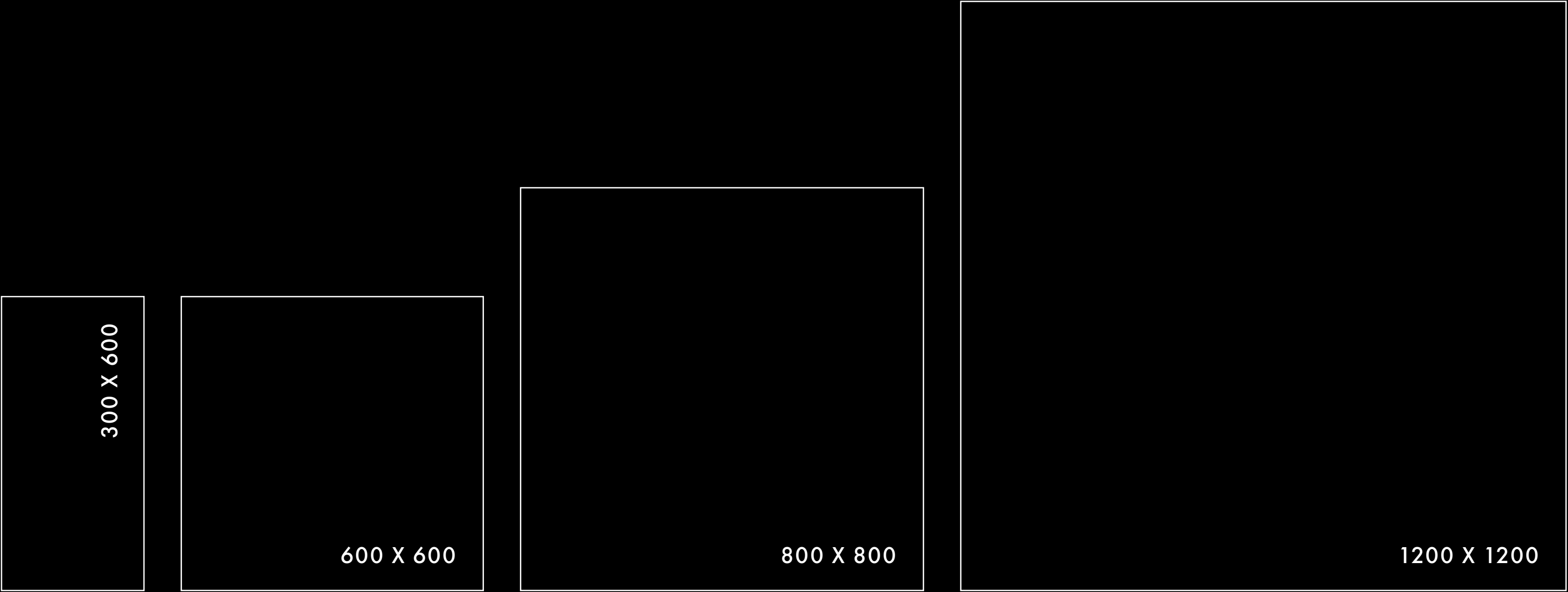


Livigo

Colours

COLOUR	FINISH	SIZE(MM)
Amalfi Lipari	Natural	1200 X 1200 X 10
Argentario	Natural	1200 X 1200 X 9
Amalfi	Natural	800 X 800 X 11
Argentario Lipari	Polished	800 X 800 X 11
Amalfi Argentario Lipari Livigno	Natural	600 X 600 X 9.5
Amalfi Argentario Lipari Livigno	Polished	600 X 600 X 9.5
Amalfi Argentario Lipari Livigno	Grip	300 X 600 X 9.5
Amalfi Argentario Lipari Livigno	Natural	300 X 600 X 9.5
Amalfi Argentario Lipari Livigno	Polished	300 X 600 X 9.5

Size Guide (mm)

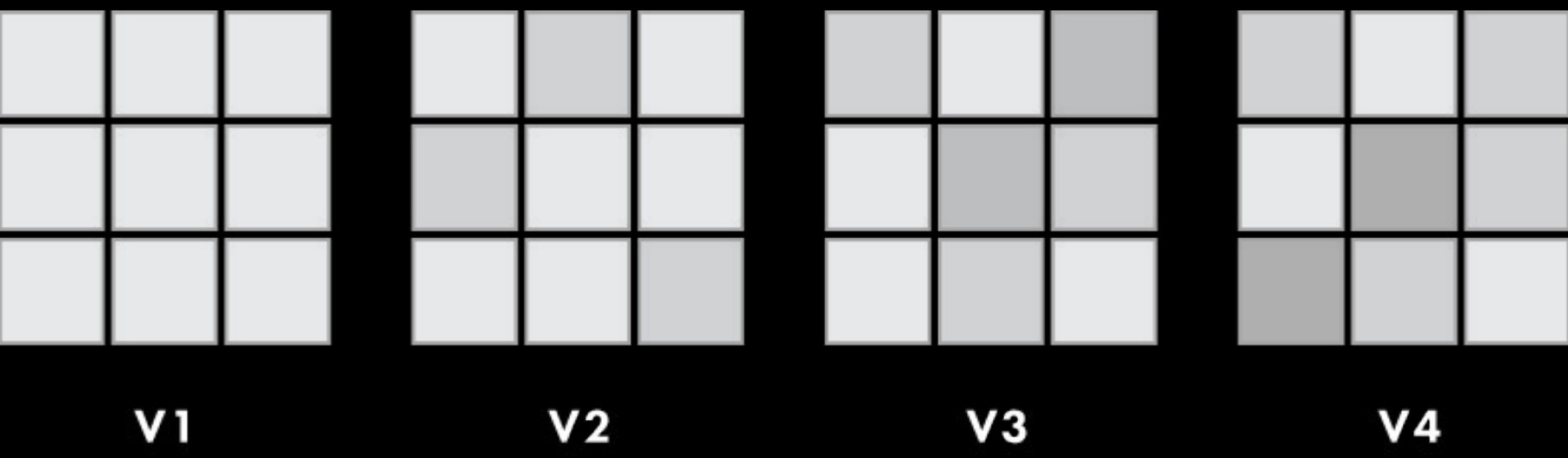


Technical Details

PHYSICAL PROPERTIES	STANDARD OF TEST	REQUIRED VALUE	MANUFACTURERS MEAN VALUES
Length and Width	ISO 10545-2	±0.6%	Conforms
Thickness	ISO 10545-2	±5%	Conforms
Warpages of Edges	ISO 10545-2	±0.5%	Conforms
Wedging	ISO 10545-2	±0.5%	Conforms
Flatness	ISO 10545-2	±0.5%	Conforms
Water Absorption	ISO 10545-3	≤ 0.5%	Conforms
Bending Strength	ISO 10545-4	≥35N/mm ²	Conforms
Linear Thermal Expansion Between 20C And 100C	ISO 10545-8	According to Manufacturers Specifications	On Request
Thermal Shock Resistance	ISO 10545-9	On Request	Resistant
Frost Resistance	ISO 10545-12	On Request	Resistant
Resistance to Chemical Attack	ISO 10545-13	According to Manufacturers Specifications	Resistant
Stain Resistance	ISO 10545-14	Test Method Available	Conforms

Shade Tone Variance

Shade, texture and tone can vary from piece to piece within a single tile production run. V1 shade tone variation has little or no change from piece to piece where a V4 might have a substantial variety of shade, texture and tone variation.



Variance Rating	Description
V1	Uniform Appearance
V2	Slight Variation
V3	Moderate Variation
V4	Substantial Variation

COLOUR	VARIANCE
Amalfi	V4
Argentario	V4
Lipari	V3
Livigno	V4

Ramp Test Values (DIN 51130)

DIN Standard Ramp Testing (DIN 51130) is an alternative to Pendulum Testing and generally categorised as an ‘off-site’ activity because of the size and complexity of the equipment required to carry out the test. The Slip Resistance Values (RSV) are factory gate values (based on supplied tiles) and categorised using the Ramp Test (DIN 51130) method which is commonly used by European factories. In this method, a lubricated inclined platform is adjusted to a gradually increasing gradient, and the angle is measured at which a person walking on it slips.

R Rating Value	Friction
R9	Minimal
R10	Normal
R11	Good
R12	Good
R13	Very High

COLOUR	FINISH/STYLE	R Rating Value	Friction
Amalfi	Grip	R11	Good
Amalfi	Natural	R10	Normal
Argentario	Grip	R11	Good
Argentario	Natural	R10	Normal
Lipari	Grip	R11	Good
Lipari	Natural	R10	Normal
Livigno	Grip	R11	Good
Livigno	Natural	R10	Normal



Environmental Certification



LEED® certification provides independent, third party verification that a building project meets the highest green building and performance measure. All certified projects receive a LEED® plaque, which is nationally recognised symbol demonstrating that a building is environmentally responsible, profitable and a healthy place to live and work. The environmental characteristics have been evaluated and found according to the requirements of content of recycled material for environmental assessment according to LEED® criteria. These products contribute to the increase in the LEED® rating of buildings where they are used.



The EU Ecolabel helps you identify products and services that have a reduced environmental impact throughout their life cycle, from the extraction of raw material through to production, use and disposal. Recognised throughout Europe, EU Ecolabel is a voluntary label promoting environmental excellence which can be trusted. Ecolabel certification applies to building products such as ceramic tiles for residential and public flooring and wall- covering. The commission in charge of the certification system measures the environmental impact caused by the entire productive cycle; in the case of ceramic tiles, the verification starts from raw material quarrying through to manufacturing, distribution, installation and their final disposal. Our factories conform and are certified by the European Community standard Ecolabel and the production process is in complete harmony with the Ecolabel certification.



GREENGUARD Certification ensures that a product meets stringent standards for minimal emissions of volatile organic compounds (VOCs) into indoor air. This program provides assurance that products designed for indoor use adhere to strict chemical emissions limits, fostering the creation of healthier interiors. Manufacturers with GREENGUARD Certification gain credibility for their sustainability claims, supported by empirical technical data from an unbiased third-party organisation. The GREENGUARD Certification Program instills confidence by ensuring that indoor products meet strict chemical emissions limits, contributing to the creation of healthier interior spaces. This empowers manufacturers to produce and customers to identify products with low chemical emissions, thereby supporting air quality and environmental well-being.



NSF® has facilitated the development of more than 75 standards and protocols for sanitary food equipment, and has certified thousands of products as safe to use in restaurant and commercial kitchen settings. NSF® food equipment standards include requirements for material safety, design, construction and product performance. The products conform to the requirements of NSF/ANSI Standard 51 – Food Equipment Materials. NSF/ANSI 51 establishes minimum public health and sanitation requirements for materials and finishes used in the manufacture of commercial foodservice equipment



An Environmental Product Declaration (EPD) is a concise document that transparently communicates the environmental performance of a product throughout its life cycle. It provides comprehensive information about the product's environmental impact, including aspects such as raw material extraction, production processes, energy consumption, and emissions. EPDs are based on standardised methodologies and enable consumers, businesses, and policymakers to make informed decisions by considering the environmental aspects of a product in a systematic and comparable way.

P O R C E L A I N T I L E S

North London Showroom
23 Temple Fortune Parade
Finchley Road
London NW11 0QS
020 3141 3337

www.porcelaintiles.co.uk

South London Showroom
88 High Street Wimbledon
London SW19 5EG
020 3141 3337

enquiry@porcelaintiles.co.uk