

Equilibrio

Concrete Collection

P O R C E L A I N T I L E S



Equilibrio

Concrete Collection

Featuring a curated palette of cool hues and contemporary tones, “Equilibrio” offers true architectural versatility. Whether used independently or in combination with other materials, our latest concrete collection of porcelain tiles provides essential Equilibrio to your designs. Use this collection to create harmony with bold patterns and striking feature walls. Available in large and standard formats, (with R10 and R11 slip ratings), Equilibrio is perfect for both residential and commercial applications with its diverse colour options. While its cohesive and contemporary aesthetic can enhance spatial harmony and design integrity. Each hue is also available in the “Line” variant, characterised by a three-dimensional pinstripe relief that adds interest and texture to your vertical surfaces.

18 COLOURS | 4 SIZES | 2 FINISHES



Calma - Stone & Vine Red

Colours



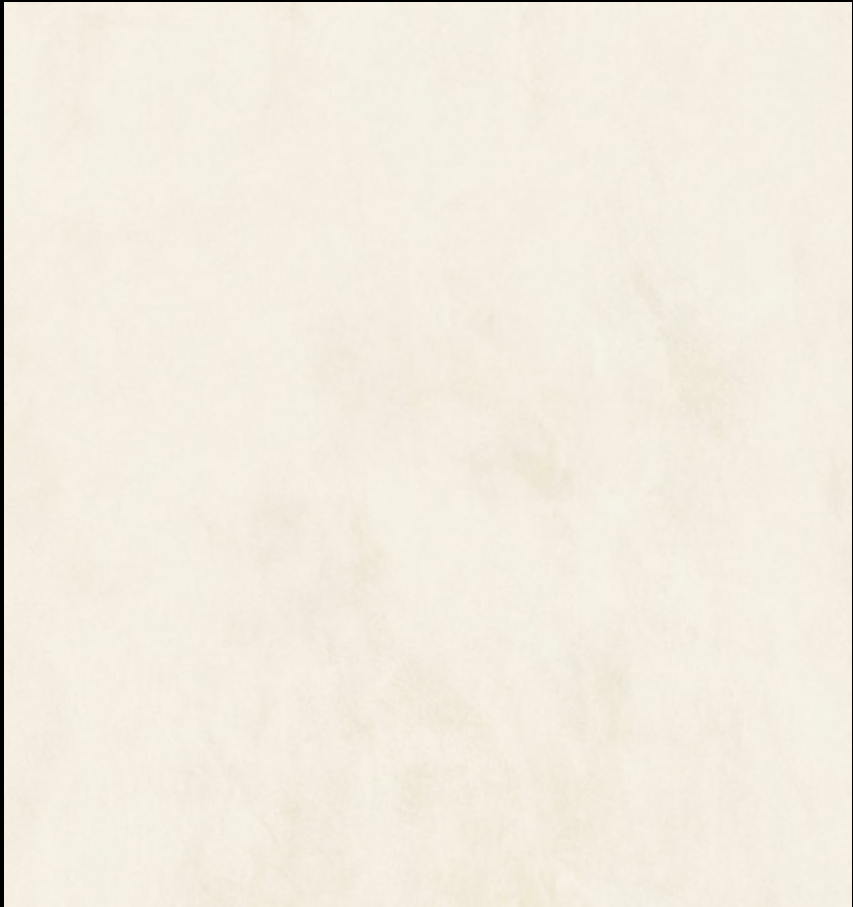
Olive Green



Coal



Slate Grey



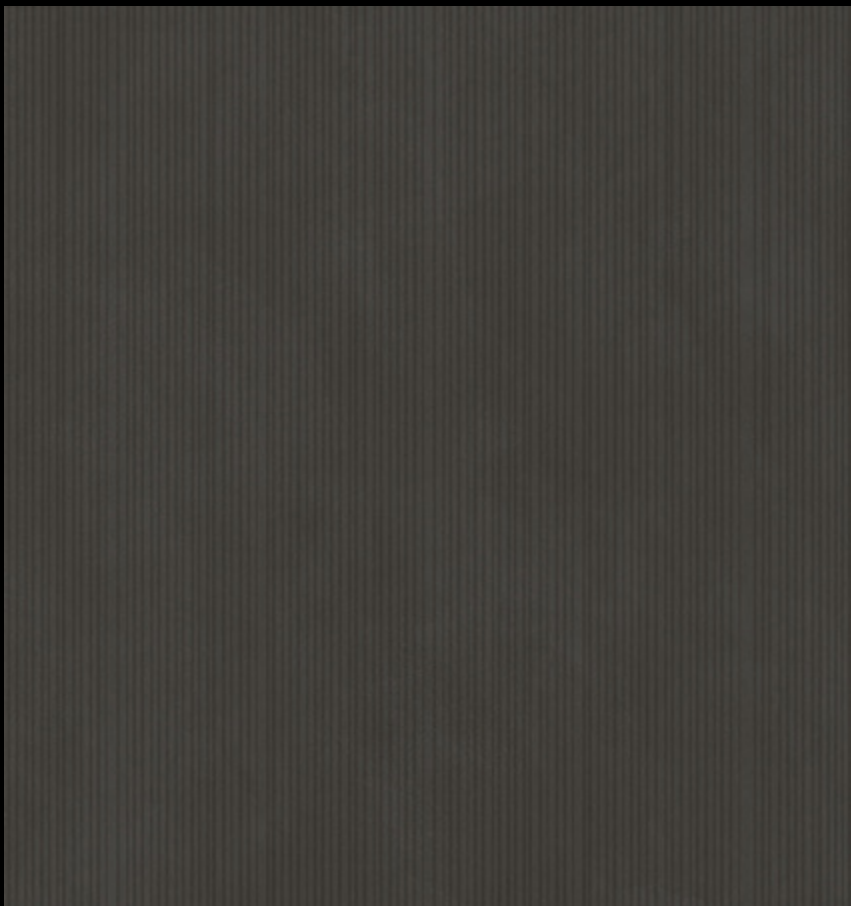
Alabaster



Pale Grey



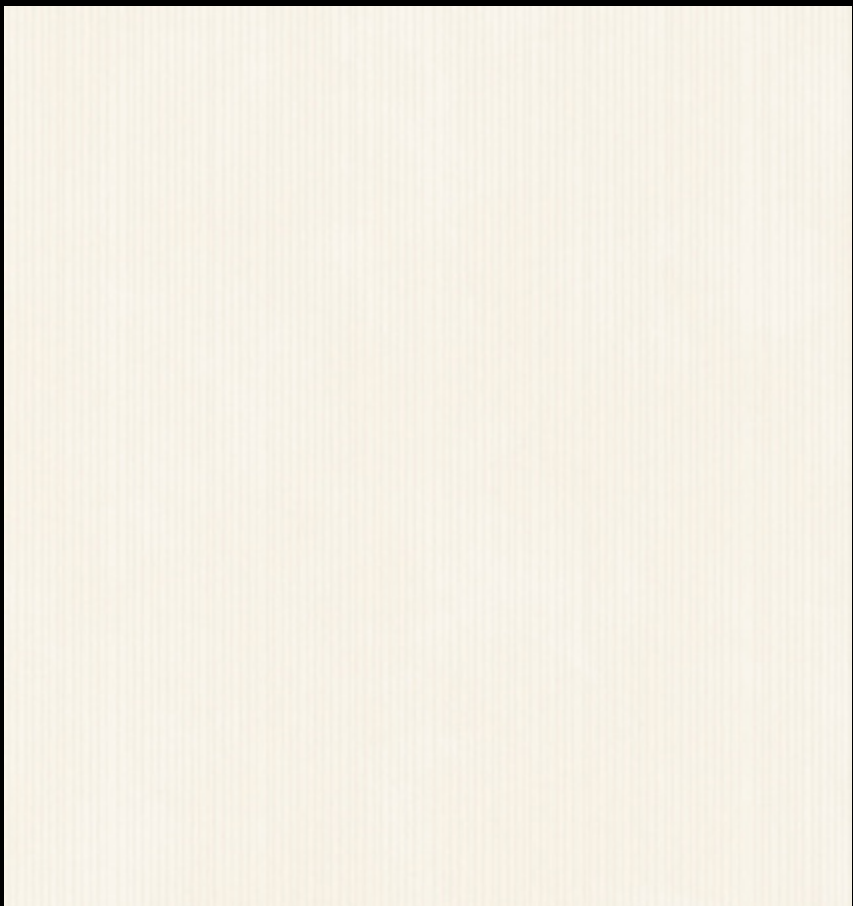
Olive Green Line



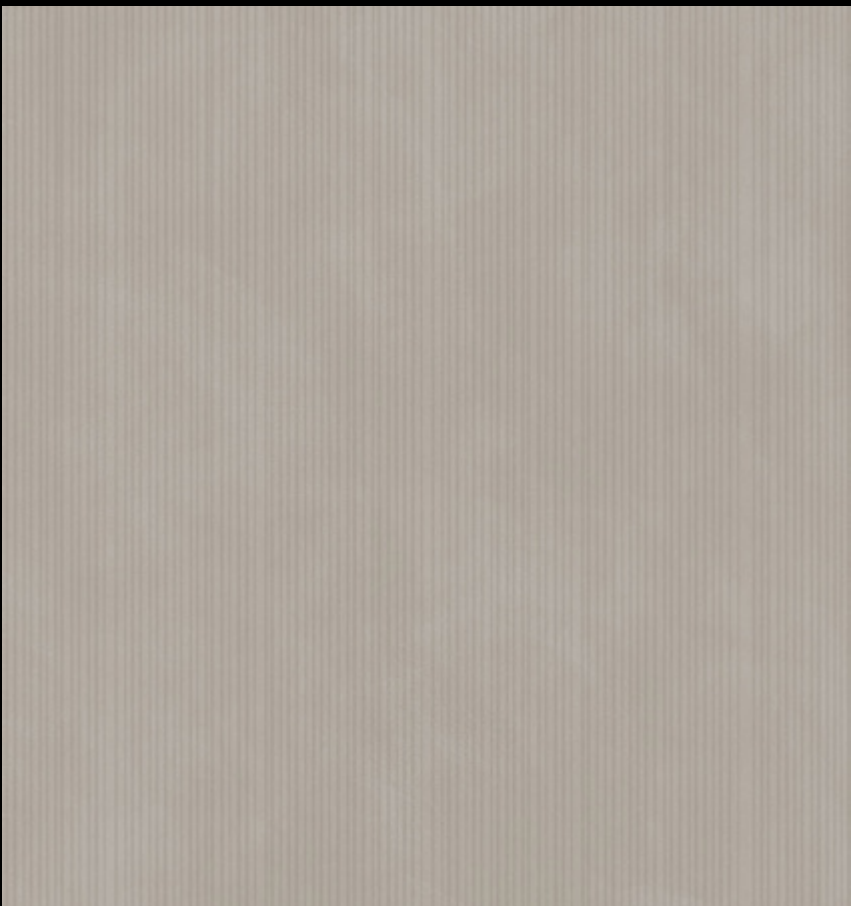
Coal Line



Slate Grey Line



Alabaster Line

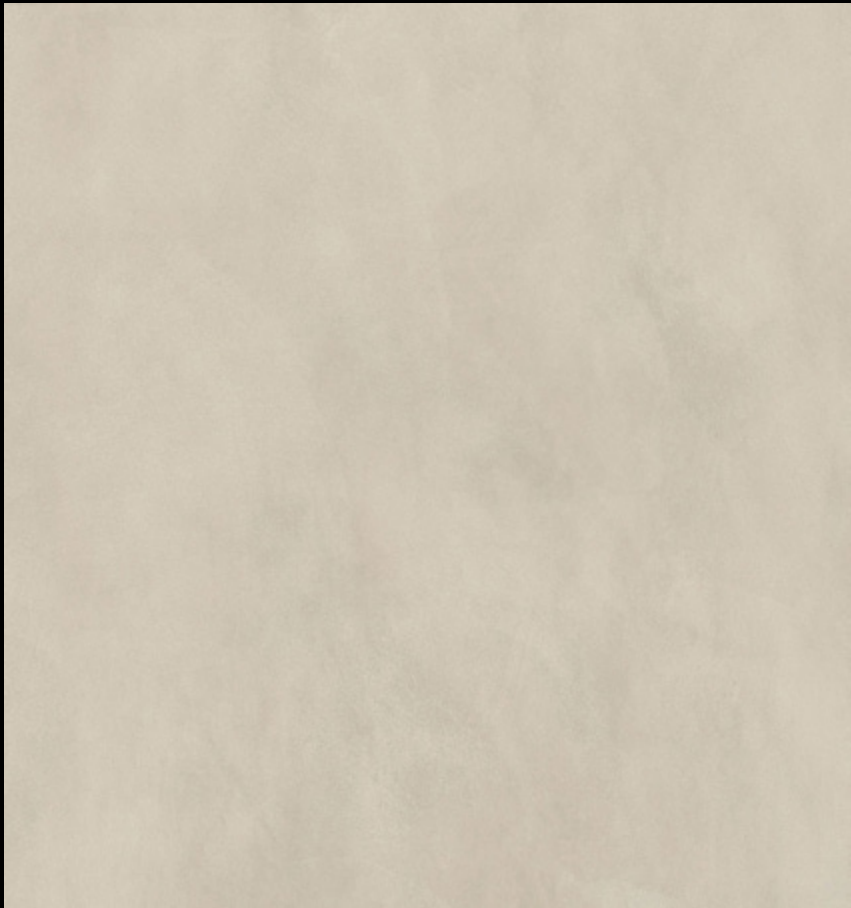


Pale Grey Line

Colours



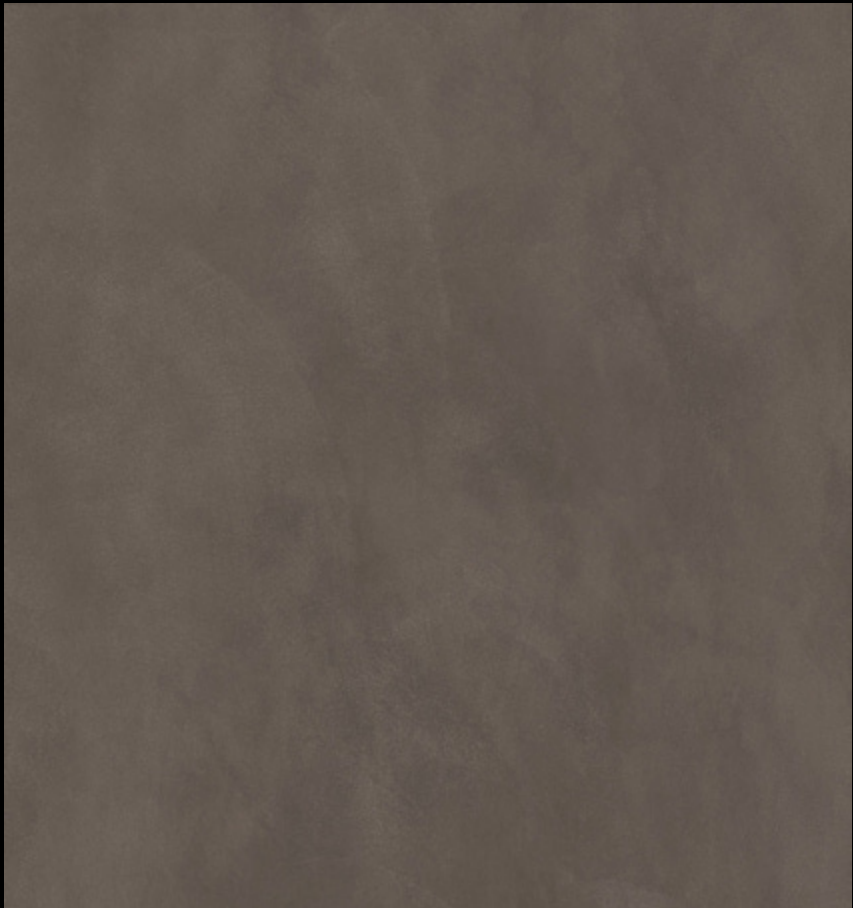
Vine Red



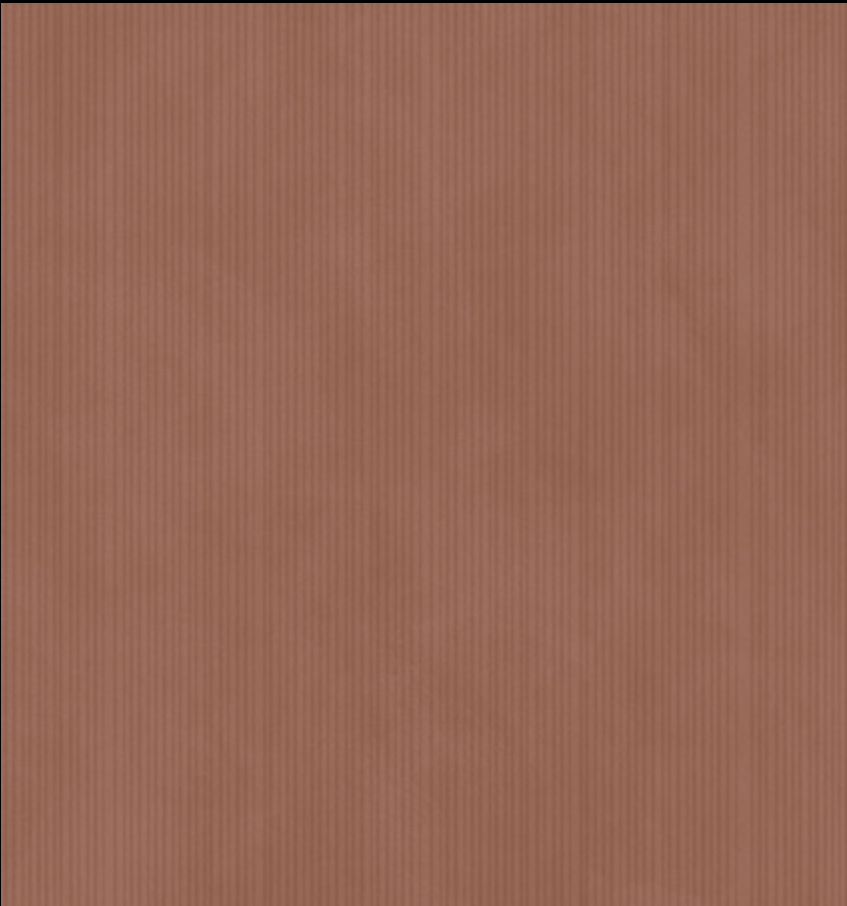
Stone



Storm Blue



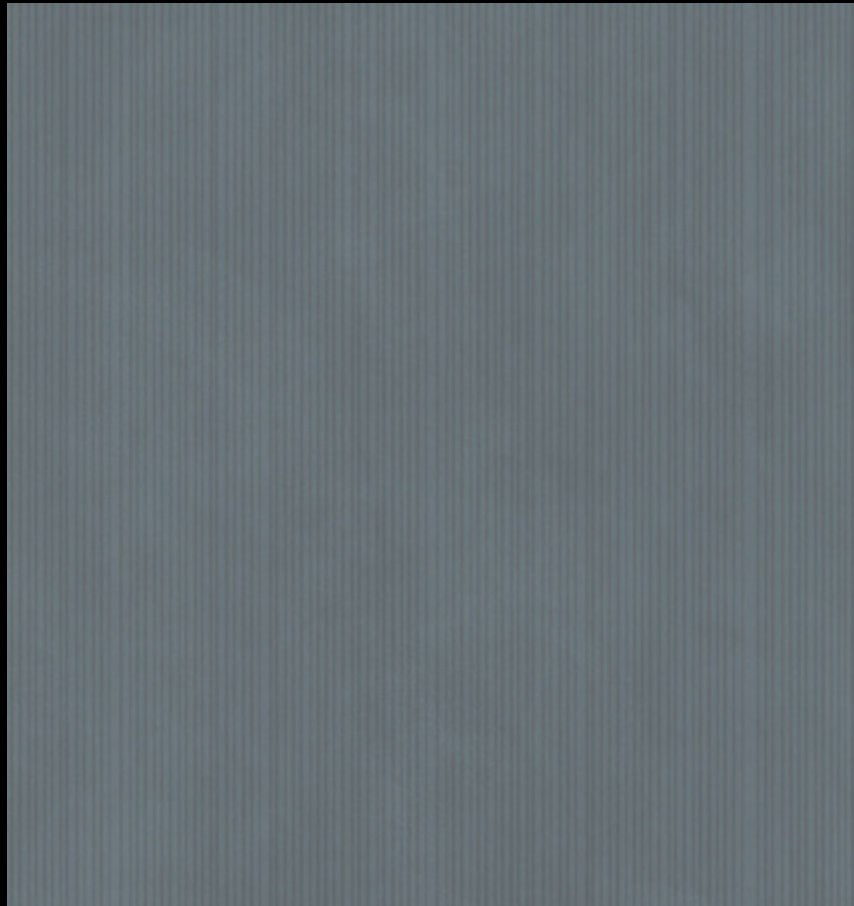
Mocha



Vine Red Line



Stone Line



Storm Blue Line



Mocha Line

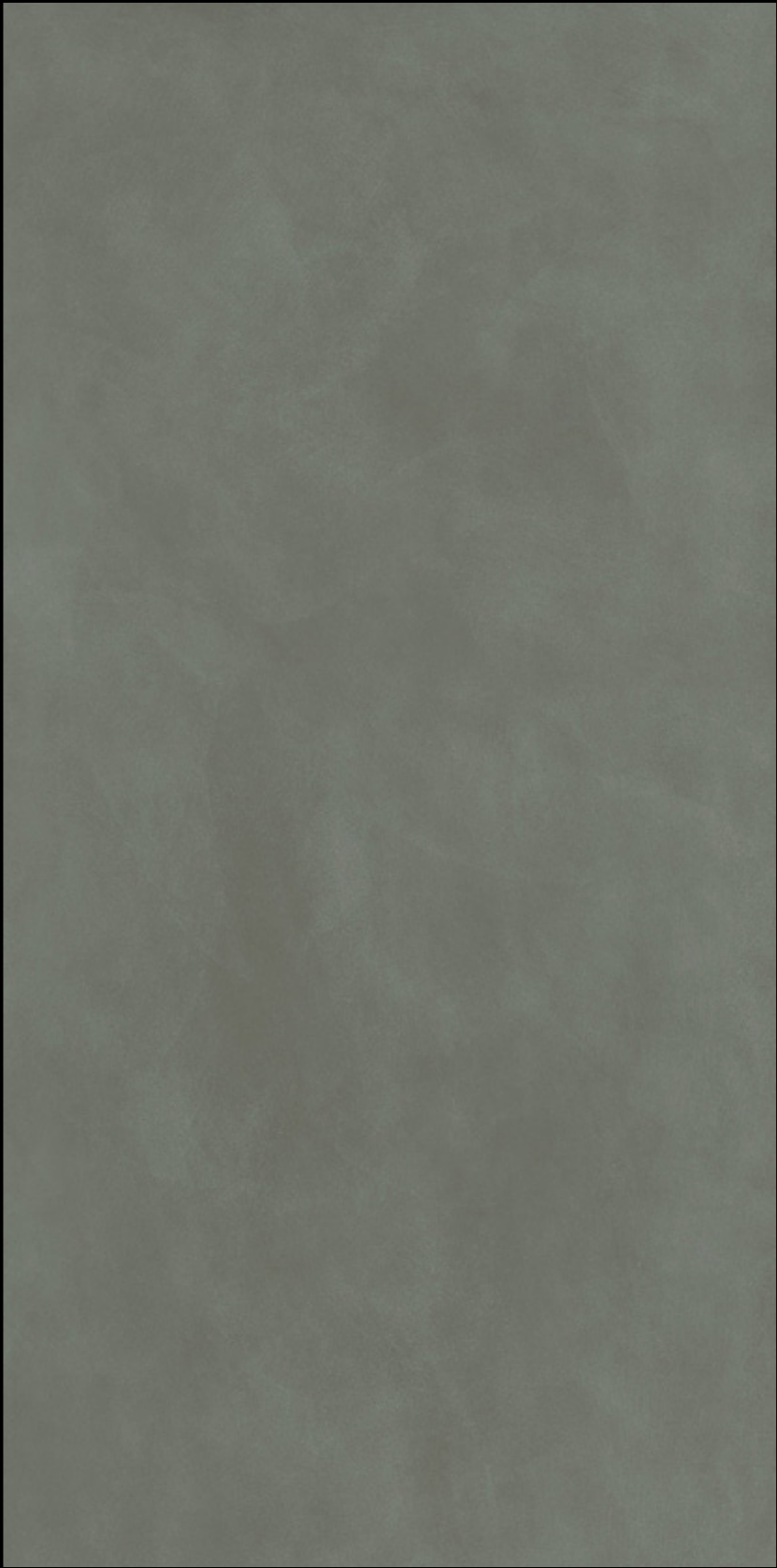
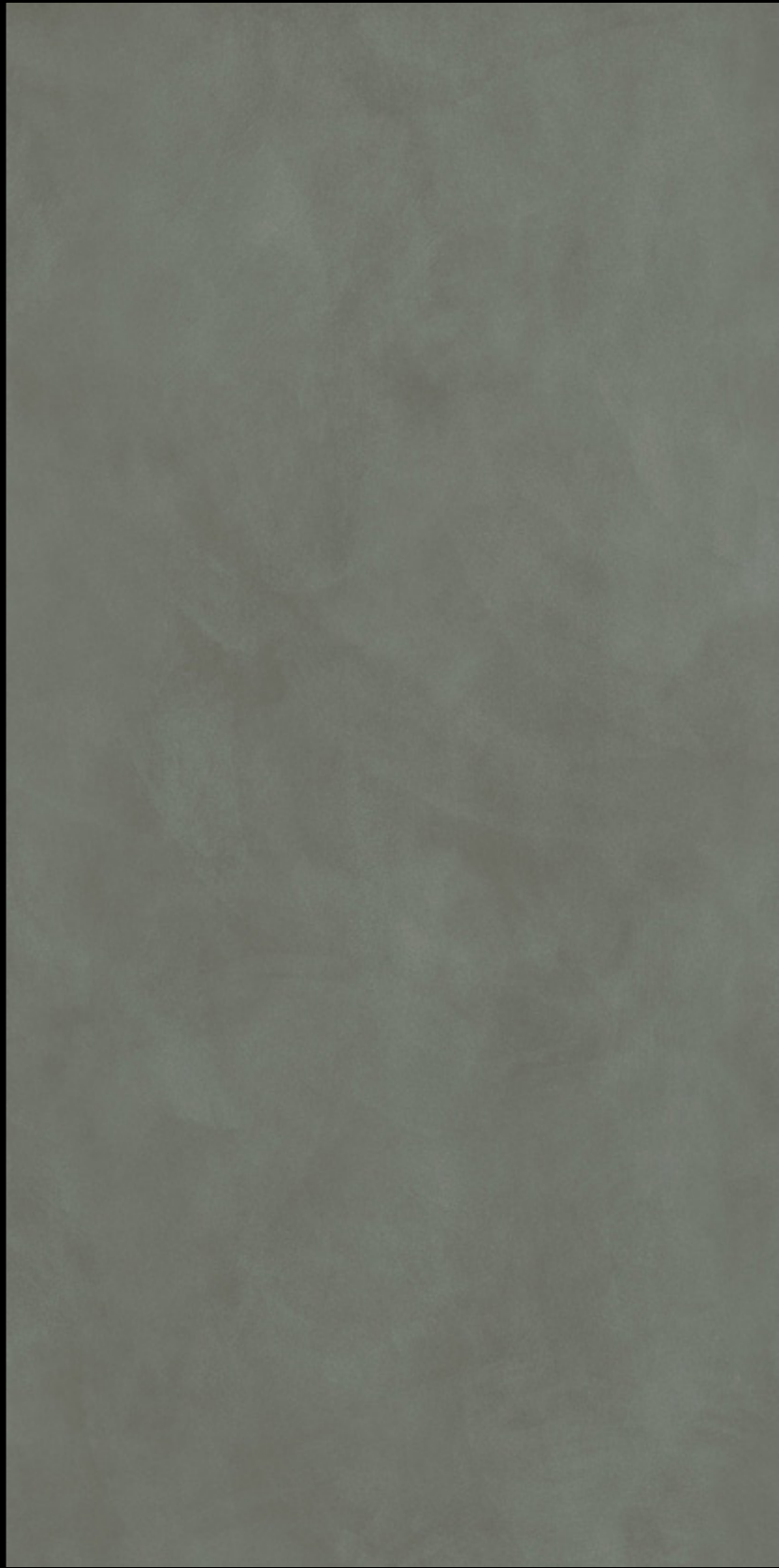
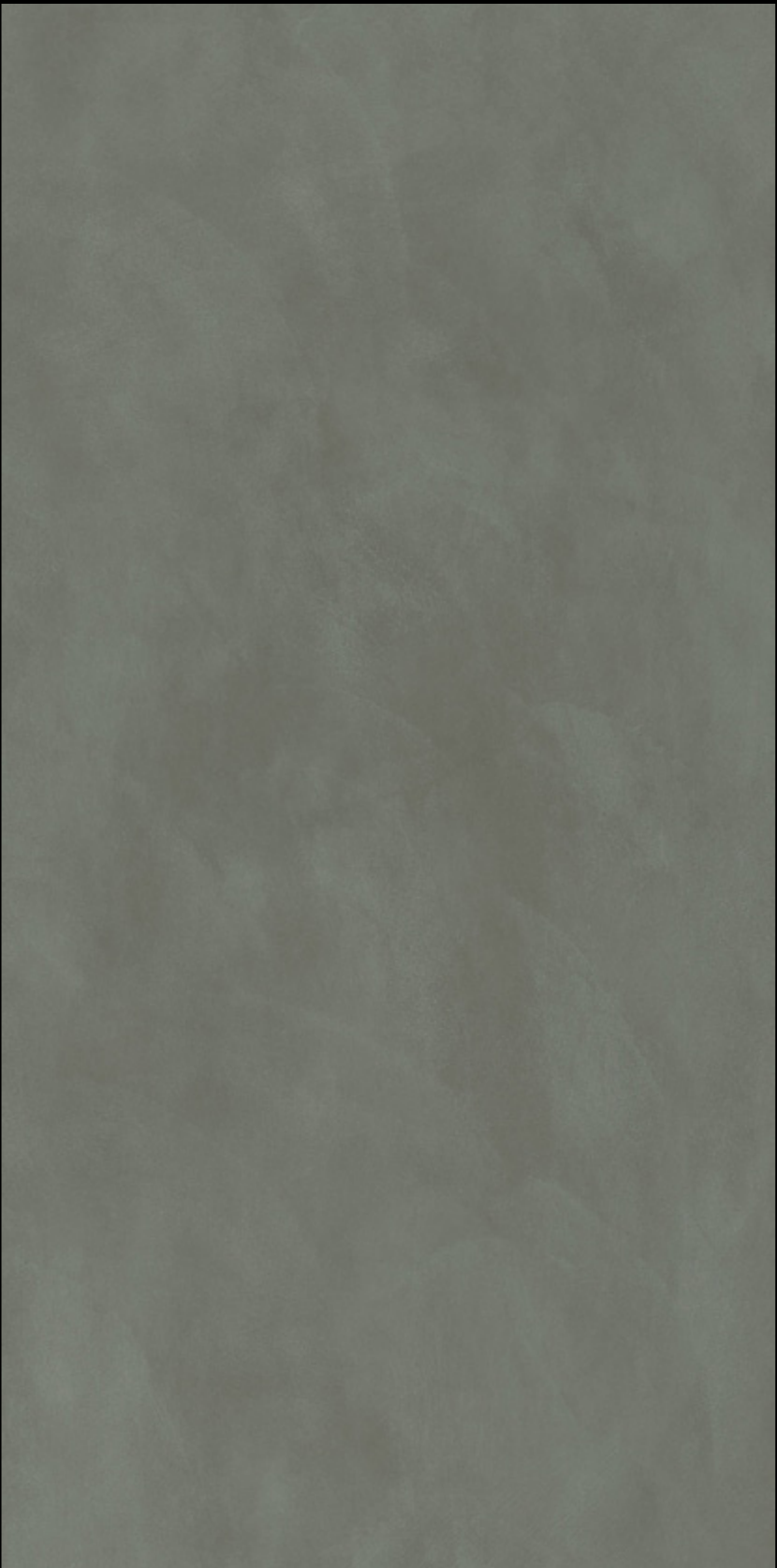
Equilibrio
Olive Green

Face 1

Face 2

Face 3

Face 4





Equilibrio
Olive Green Line



Equilibrio - Olive Green

Equilibrio
Coal

Face 1

Face 2

Face 3

Face 4



Equilibrio
Coal Line





Equilibrio
Slate Grey | Slate Grey Line



Equilibrio
Alabaster | Alabaster Line

Face 1



Face 2



Face 3



Face 4



Face 1 (Line)





Equilibrio - Alabaster

Equilibrio
Pale Grey | Pale Grey Line





Equilibrio - Pale Grey (wall)

Equilibrio

Vine Red | Vine Red Line





148

Equilibrio
Stone | Stone Line





Equilibrio - Stone (floor)

Equilibrio
Storm Blue

Face 1

Face 2

Face 3

Face 4





Equilibrio
Storm Blue Line



Equilibrio - Storm Blue

Equilibrio

Mocha

Face 1

Face 2

Face 3

Face 4





Equilibrio
Mocha Line



Equilibrio - Mocha (wall)

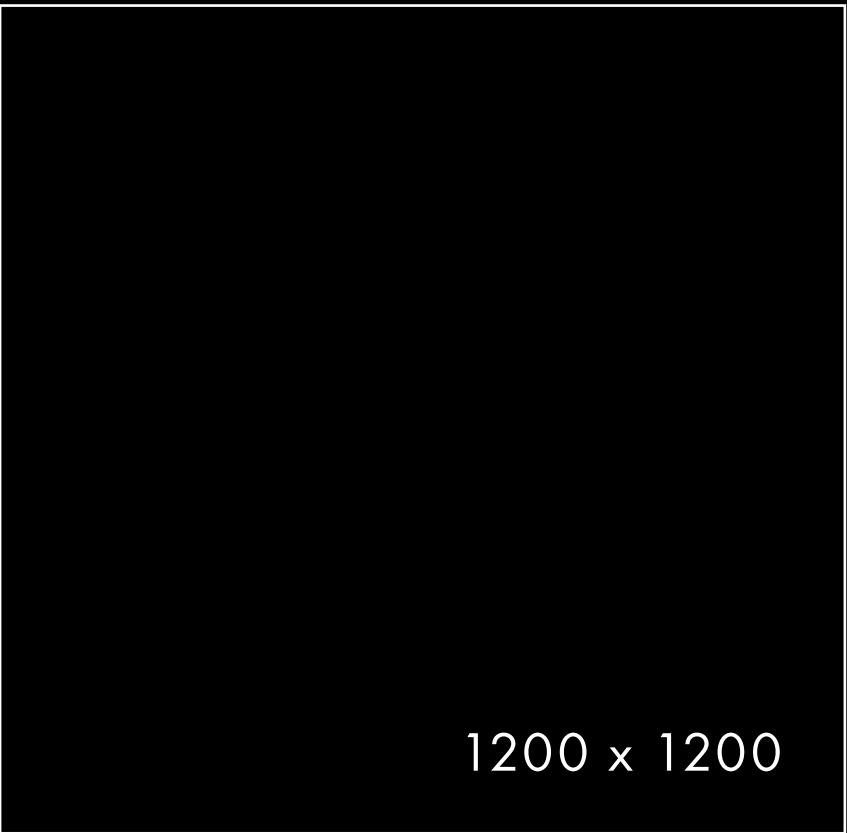
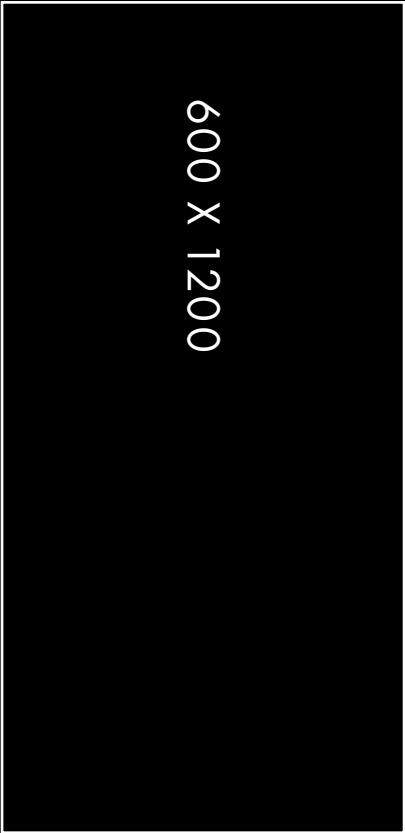
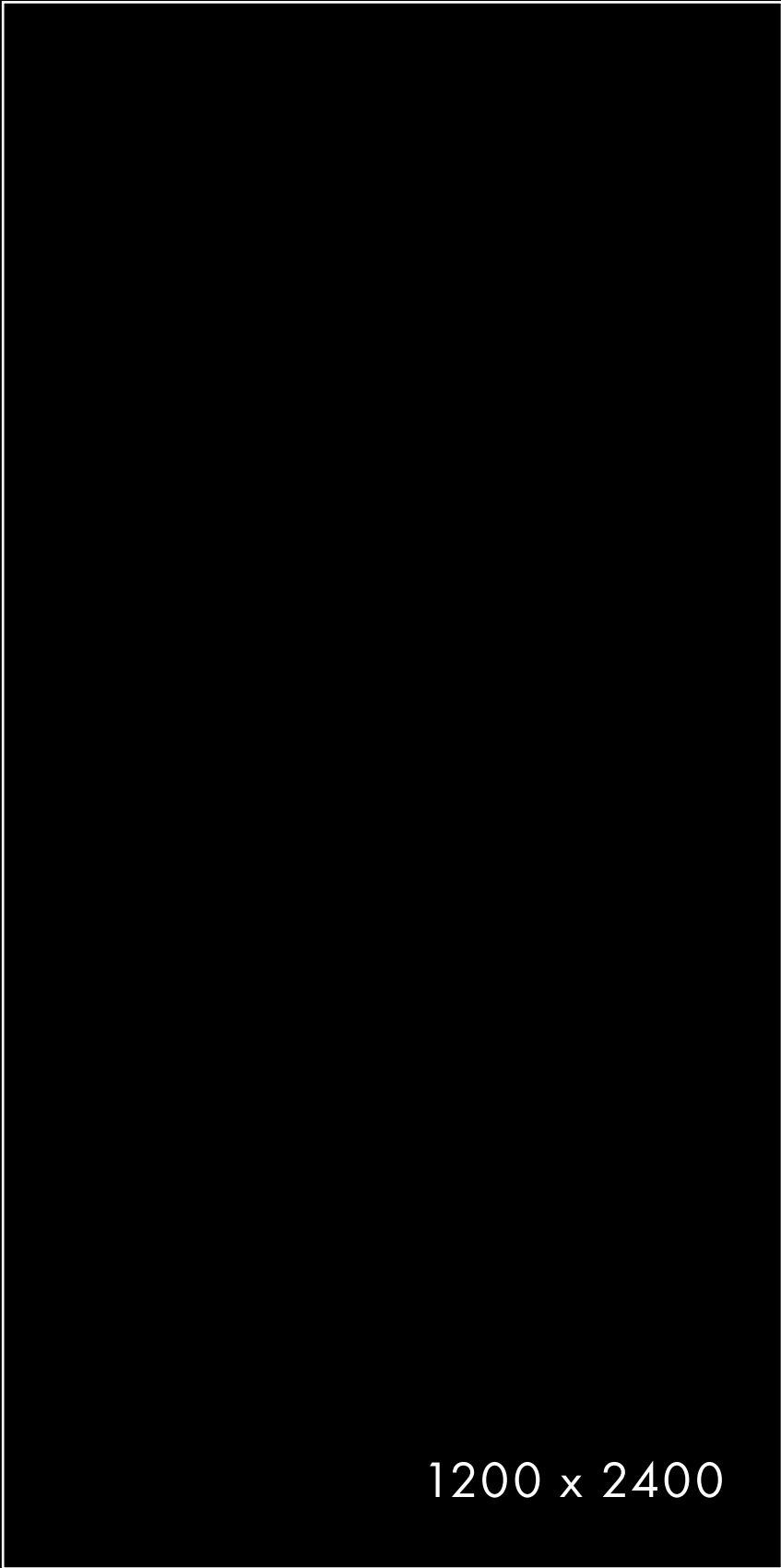
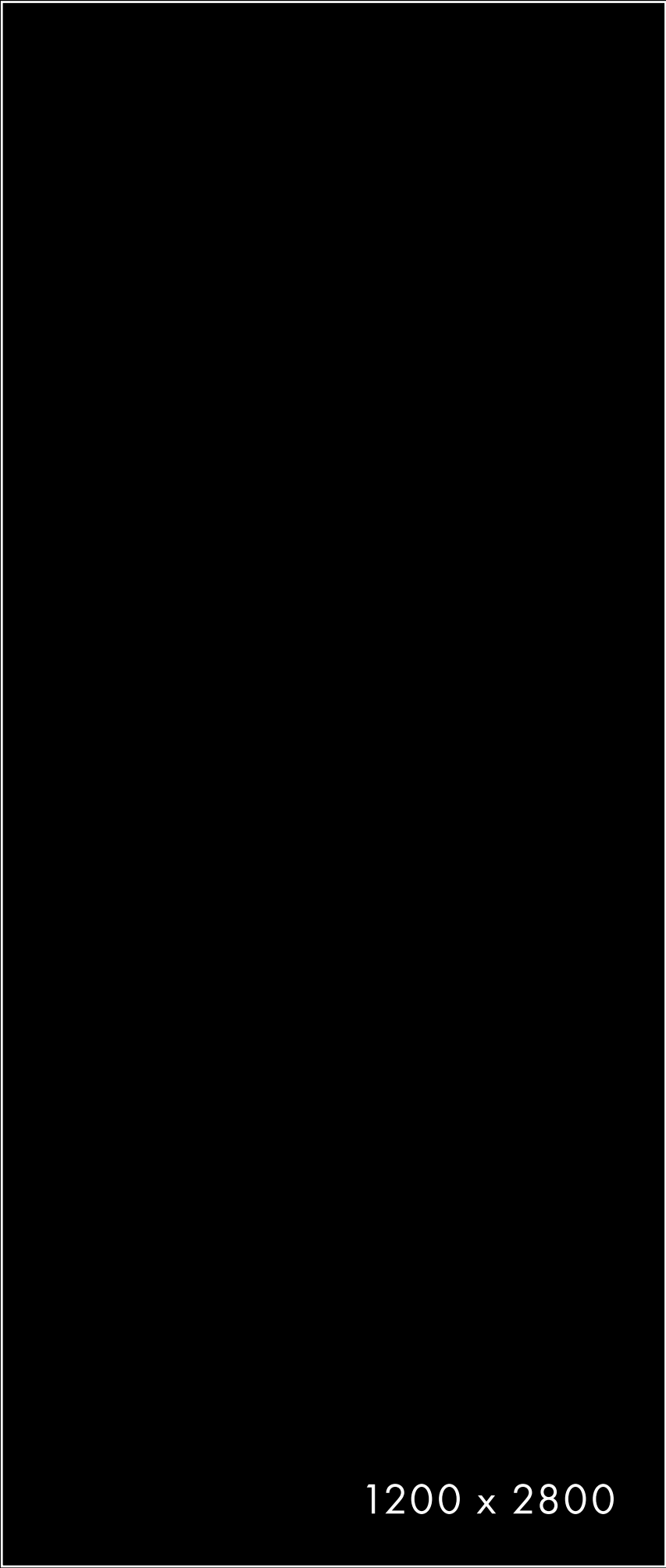
Colours

COLOUR	FINISH	SIZE(MM)
Alabaster Alabaster Line Coal Coal Line Mocha Mocha Line		
Olive Green Olive Green Line Pale Grey Pale Grey Line Slate Grey		
Slate Grey Line Stone Stone Line Storm Blue Storm Blue Line Wine Red Wine Red Line	Natural	1200 x 2800 x 6
Alabaster Coal Mocha Olive Green Pale Grey Slate Grey Stone Storm Blue Wine Red	Natural	1200 x 2400 x 6
Alabaster Coal Mocha Olive Green Pale Grey Slate Grey Stone Storm Blue Wine Red	Natural	1200 x 1200 x 9
Alabaster Coal Mocha Olive Green Pale Grey Slate Grey Stone Storm Blue Wine Red	Natural	1200 x 1200 x 6
Alabaster Pale Grey Slate Grey Stone	Grip	600 x 1200 x 9
Alabaster Coal Mocha Olive Green Pale Grey Slate Grey Stone Storm Blue Wine Red	Natural	600 x 1200 x 9
Alabaster Coal Mocha Olive Green Pale Grey Slate Grey Stone Storm Blue Wine Red	Natural	600 x 1200 x 6

Special Pieces & Mosaic

	Finish	Size (MM)	Special Piece
Alabaster Coal Mocha Olive Green Pale Grey Slate Grey Stone Storm Blue Wine Red	Natural	46 x 1200 x 9	Skirting Tile

Size Guide (mm)

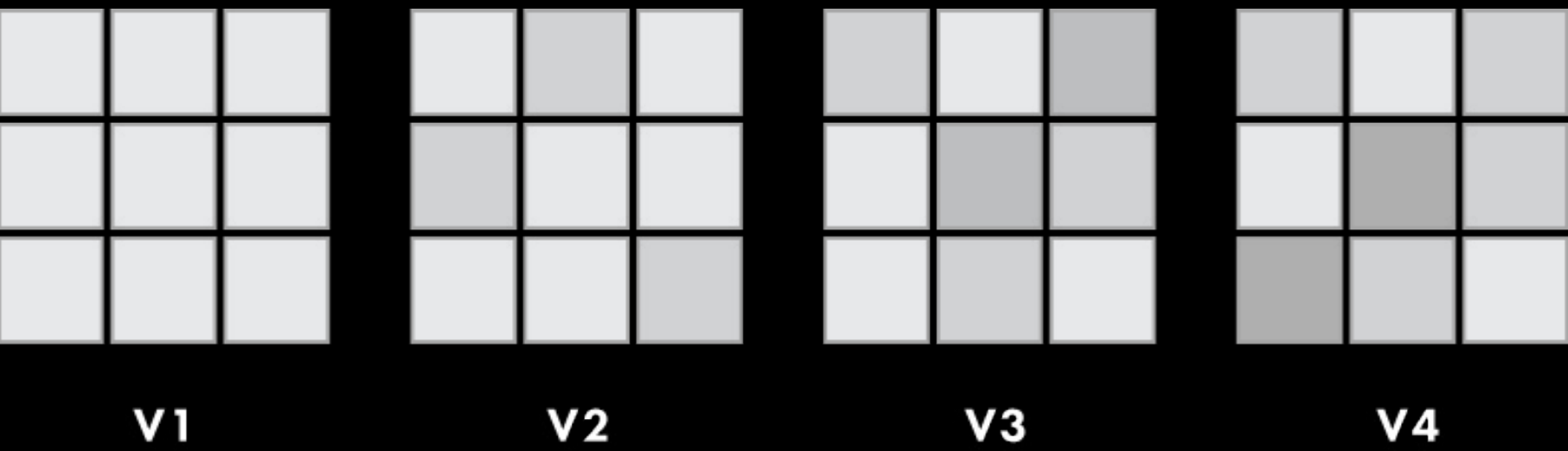


Technical Details

SPECIFICATION	STANDARD OF TEST	REQUIRED VALUE	MANUFACTURERS MEAN VALUES
Length And Width	ISO 10545-2	± 0.3% Max	± 0.15%
Thickness	ISO 10545-2	± 5% Max	± 5%
Linearity	ISO 10545-2	± 0.3% Max	± 0.1%
Wedging	ISO 10545-2	± 0.3% Max	± 0.2%
Warpage	ISO 10545-2	± 0.4% Max	± 0.35%
Water Absorption	ISO 10545-3	≤ 0.5%	≤ 0.08%
Deep Abrasion Resistance	ISO 10545-7	<175mm3	140mm3
Resistance To Thermal Shocks	ISO 10545-9	Testing Method Available	Resistant
Frost Resistance	ISO 10545-12	Must Not Produce Noticeable Alteration To Surface	Conforms
Chemical Resistance	ISO 10545-13	Testing Method Available	On Request
Stain Resistance	ISO 10545-14	Testing Method Available	Classe 4-5

Shade Tone Variance

Shade, texture and tone can vary from piece to piece within a single tile production run. V1 shade tone variation has little or no change from piece to piece where a V4 might have a substantial variety of shade, texture and tone variation.



Variance Rating	Description
V1	Uniform Appearance
V2	Slight Variation
V3	Moderate Variation
V4	Substantial Variation

COLOUR	VARIANCE
All Colours	V2

Ramp Test Values (DIN 51130)

DIN Standard Ramp Testing (DIN 51130) is an alternative to Pendulum Testing and generally categorised as an ‘off-site’ activity because of the size and complexity of the equipment required to carry out the test. The Slip Resistance Values (RSV) are factory gate values (based on supplied tiles) and categorised using the Ramp Test (DIN 51130) method which is commonly used by European factories. In this method, a lubricated inclined platform is adjusted to a gradually increasing gradient, and the angle is measured at which a person walking on it slips.

R Rating Value	Friction
R9	Minimal
R10	Normal
R11	Good
R12	Good
R13	Very High

COLOUR	FINISH/STYLE	R Rating Value	Friction
Coal	Natural	R10	Normal
Slate Grey	Grip	R11	Good
Slate Grey	Natural	R10	Normal
Alabaster	Grip	R11	Good
Alabaster	Natural	R10	Normal
Pale Grey	Grip	R11	Good
Pale Grey	Natural	R10	Normal
Stone	Grip	R11	Good
Stone	Natural	R10	Normal
Olive Green	Natural	R10	Normal
Storm Blue	Natural	R10	Normal
Mocha	Natural	R10	Normal
Wine Red	Natural	R10	Normal



Equilibrio - Olive Green & Coal



Equilibrio - Storm Blue | Storm Blue Line | Coal

Environmental Certification



LEED® certification provides independent, third party verification that a building project meets the highest green building and performance measure. All certified projects receive a LEED® plaque, which is nationally recognised symbol demonstrating that a building is environmentally responsible, profitable and a healthy place to live and work. The environmental characteristics have been evaluated and found according to the requirements of content of recycled material for environmental assessment according to LEED® criteria. These products contribute to the increase in the LEED® rating of buildings where they are used.



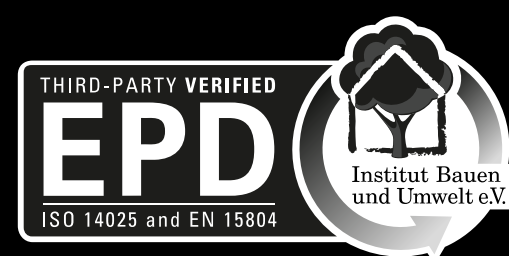
The EU Ecolabel helps you identify products and services that have a reduced environmental impact throughout their life cycle, from the extraction of raw material through to production, use and disposal. Recognised throughout Europe, EU Ecolabel is a voluntary label promoting environmental excellence which can be trusted. Ecolabel certification applies to building products such as ceramic tiles for residential and public flooring and wall-covering. The commission in charge of the certification system measures the environmental impact caused by the entire productive cycle; in the case of ceramic tiles, the verification starts from raw material quarrying through to manufacturing, distribution, installation and their final disposal. Our factories conform and are certified by the European Community standard Ecolabel and the production process is in complete harmony with the Ecolabel certification.



GREENGUARD Certification ensures that a product meets stringent standards for minimal emissions of volatile organic compounds (VOCs) into indoor air. This program provides assurance that products designed for indoor use adhere to strict chemical emissions limits, fostering the creation of healthier interiors. Manufacturers with GREENGUARD Certification gain credibility for their sustainability claims, supported by empirical technical data from an unbiased third-party organisation. The GREENGUARD Certification Program instills confidence by ensuring that indoor products meet strict chemical emissions limits, contributing to the creation of healthier interior spaces. This empowers manufacturers to produce and customers to identify products with low chemical emissions, thereby supporting air quality and environmental well-being.



NSF® has facilitated the development of more than 75 standards and protocols for sanitary food equipment, and has certified thousands of products as safe to use in restaurant and commercial kitchen settings. NSF® food equipment standards include requirements for material safety, design, construction and product performance. The products conform to the requirements of NSF/ANSI Standard 51 – Food Equipment Materials. NSF/ANSI 51 establishes minimum public health and sanitation requirements for materials and finishes used in the manufacture of commercial foodservice equipment.



An Environmental Product Declaration (EPD) is a concise document that transparently communicates the environmental performance of a product throughout its life cycle. It provides comprehensive information about the product's environmental impact, including aspects such as raw material extraction, production processes, energy consumption, and emissions. EPDs are based on standardised methodologies and enable consumers, businesses, and policymakers to make informed decisions by considering the environmental aspects of a product in a systematic and comparable way.

P O R C E L A I N T I L E S

North London Showroom
23 Temple Fortune Parade
Finchley Road
London NW11 0QS
020 3141 3337

www.porcelaintiles.co.uk

South London Showroom
88 High Street Wimbledon
London SW19 5EG
020 3141 3337

enquiry@porcelaintiles.co.uk