

The background of the entire image is a dark, textured pattern resembling marbled paper or stone. It features swirling, organic shapes in various shades of dark grey, black, and charcoal, creating a complex, layered visual effect.

Provence

Stone Collection

P O R C E L A I N T I L E S



Provence - Minima Dune (walls) | Roccia Dune (floor) | Dune Mix

Provence

Stone Collection

The Provence Collection captures the essence of fine French limestone, presenting an exceptionally realistic portrayal of natural stone patterns and textures. This collection offers three timeless shades - Dove, Dune, and Pearl, each crafted to bring elegance and authenticity to modern live and work spaces. Available in two distinct variants, Provence balances character and subtlety: Roccia features dramatic, sweeping veining for added visual depth, while Minima is designed with refined details for a more understated, harmonious look. Provence is offered in a range of versatile formats, including large slabs and a robust 20 mm grip finish, making it a versatile choice for projects that extend across indoor and outdoor spaces. Its design and durability make Provence an ideal option for surface cladding and flooring applications, allowing for seamless transitions between environments. Whether used as a focal point or a sophisticated backdrop, the Provence Collection brings the enduring beauty of French limestone into modern design.

6 COLOURS | 6 SIZES | 4 FINISHES





Provence
Minima Dove



Provence
Minima Dune

Face 1

Face 2

Face 3

Face 3



1200 x 2780 x 6

Provence
Minima Pearl

Face 1



Face 2



Face 3



Face 3



1200 x 2780 x 6



Provence
Roccia Dove



Provence
Roccia Dune

Face 1

Face 2

Face 3

Face 3



1200 x 2780 x 6



Provence
Roccia Pearl

Face 1

Face 2

Face 3

Face 3



1200 x 2780 x 6

Provence Colours



Minima Dove



Minima Dune



Minima Pearl



Roccia Dove



Roccia Dune



Roccia Pearl

Colours

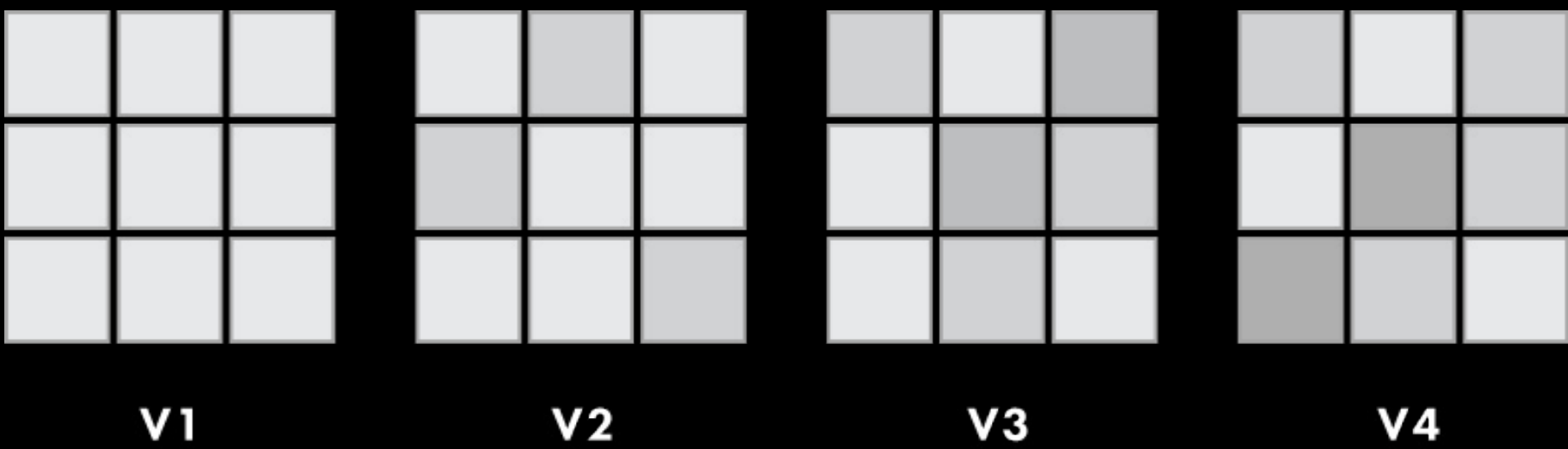
COLOUR	FINISH	SIZE(MM)
Minima Dune Minima Pearl Roccia Dune Roccia Pearl	Natural	1200 x 2780 x 6
Minima Dove Minima Dune Minima Pearl Roccia Dove Roccia Dune Roccia Pearl	Natural	1200 x 1200 x 9
Minima Dune	Structured	1200 x 1200 x 9
Roccia Dove Roccia Dune Roccia Pearl	Honed	600 x 1200 x 9
Minima Dove Minima Dune Minima Pearl Roccia Dove Roccia Dune Roccia Pearl	Natural	600 x 1200 x 9
Roccia Dove Roccia Dune Roccia Pearl	Structured	600 x 1200 x 9
Minima Dune Roccia Dune	Grip	1000 x 1000 x 20
Minima Dune Minima Pearl Roccia Dune Roccia Pearl	Natural	1000 x 1000 x 9
Minima Dove Minima Dune Minima Pearl Roccia Dove Roccia Dune Roccia Pearl	Natural	600 x 600 x 9
Minima Dove Minima Dune Minima Pearl Roccia Dove Roccia Dune Roccia Pearl	Natural	300 x 600 x 9

Technical Details

TECHNICAL DATA	STANDARD	REQUIREMENT	COLLECTION VALUE
Length and Width	ISO 10545-2	± 0.6% Max	± 0.1%
Thickness	ISO 10545-2	± 5% Max	± 5%
Linearity	ISO 10545-2	± 0.5% Max	± 0.1%
Wedging	ISO 10545-2	± 0.5% Max	± 0.1%
Warpage	ISO 10545-2	± 0.5% Max	± 0.2%
Water Absorption	ISO 10545-3	≤ 0.5 %	0.03% - 0.06%
Deep Abrasion Resistance	ISO 10545-6	≤ 175 Mm³	140 Mm³
Coefficient of Linear Thermal Expansion	ISO 10545-8	≤ 9x10-6 °C-1	6.5x10-6 °C-1
Resistance to Thermal Shocks	ISO 10545-9	Testing Method Available	Resistant
Frost Resistance	ISO 10545-12	Must not produce noticeable alteration to surface	Conforms
Chemical Resistance	ISO 10545-13	Testing Method Available	On Request
Stain Resistance	ISO 10545-14	Testing Method Available	Resistant To Stain
Colour Resistance to Light	DIN 51094	Must not produce noticeable colour variation	Conforms

Shade Tone Variance

Shade, texture and tone can vary from piece to piece within a single tile production run. V1 shade tone variation has little or no change from piece to piece where a V4 might have a substantial variety of shade, texture and tone variation.



VARIANCE RATING	DESCRIPTION
V1	Uniform Appearance
V2	Slight Variation
V3	Moderate Variation
V4	Substantial Variation

COLOUR	VARIANCE
Minima Dove	V3
Minima Dune	V3
Minima Pearl	V3
Roccia Dove	V3
Roccia Dune	V3
Roccia Pearl	V3

FOR SPECIFIC CERTIFICATES, WE CAN PROVIDE THEM ON REQUEST

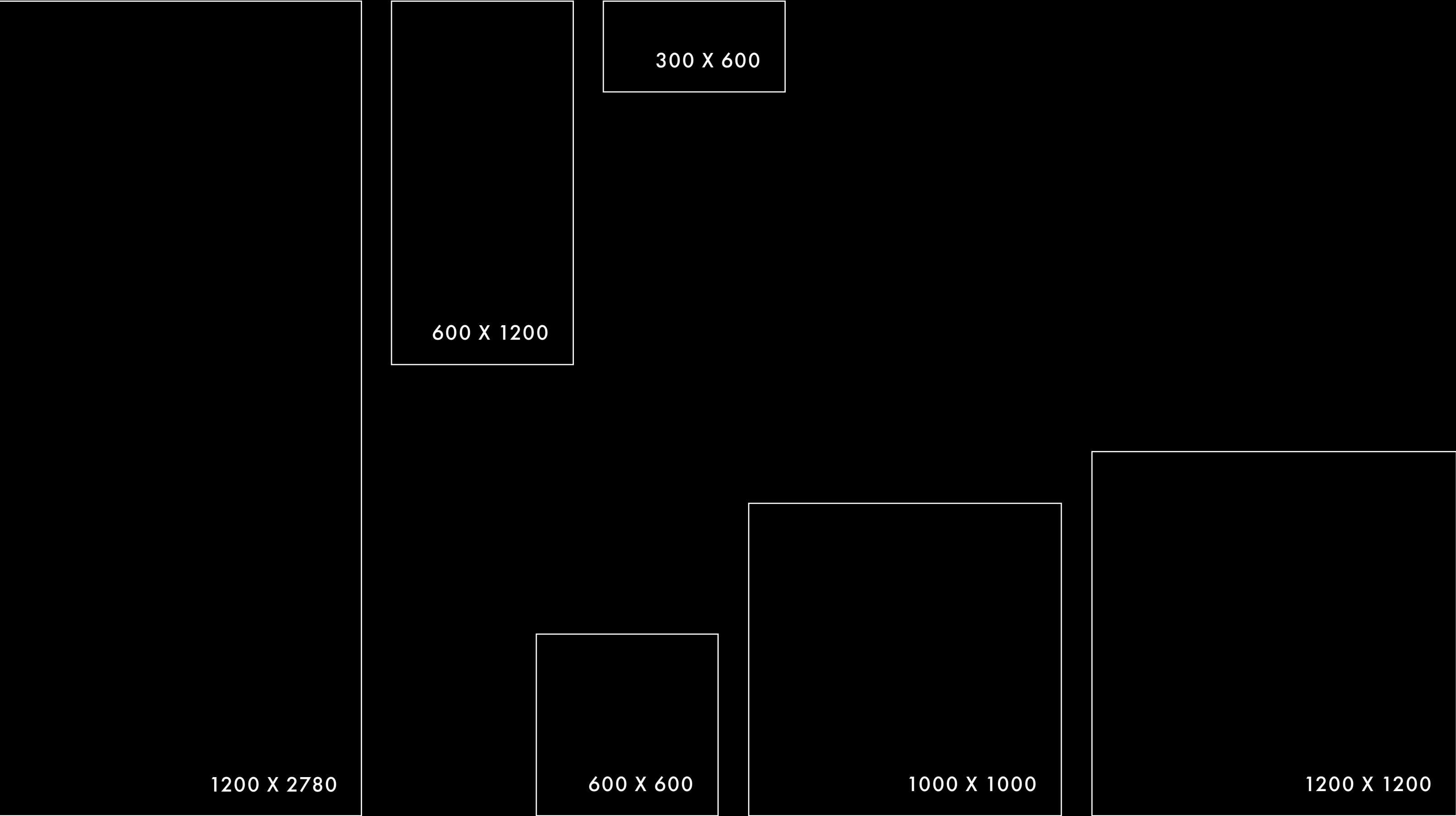
Ramp Test Values (DIN 51130)

DIN Standard Ramp Testing (DIN 51130) is an alternative to Pendulum Testing and generally categorised as an ‘off-site’ activity because of the size and complexity of the equipment required to carry out the test. The Slip Resistance Values (RSV) are factory gate values (based on supplied tiles) and categorised using the Ramp Test (DIN 51130) method which is commonly used by European factories. In this method, a lubricated inclined platform is adjusted to a gradually increasing gradient, and the angle is measured at which a person walking on it slips.

R RATING VALUE	FRICTION
R9	Minimal
R10	Normal
R11	Good
R12	Good
R13	Very High

COLOUR	FINISH/STYLE	R RATING VALUE	FRICTION
Minima Dove	Natural	R10	Normal
Minima Dune	Grip	R11	Good
Minima Dune	Natural	R10	Normal
Minima Dune	Structured	R11	Good
Minima Pearl	Natural	R10	Normal
Roccia Dove	Natural	R10	Normal
Roccia Dove	Structured	R11	Good
Roccia Dune	Grip	R11	Good
Roccia Dune	Natural	R10	Normal
Roccia Dune	Structured	R11	Good
Roccia Pearl	Natural	R10	Normal
Roccia Pearl	Structured	R11	Good

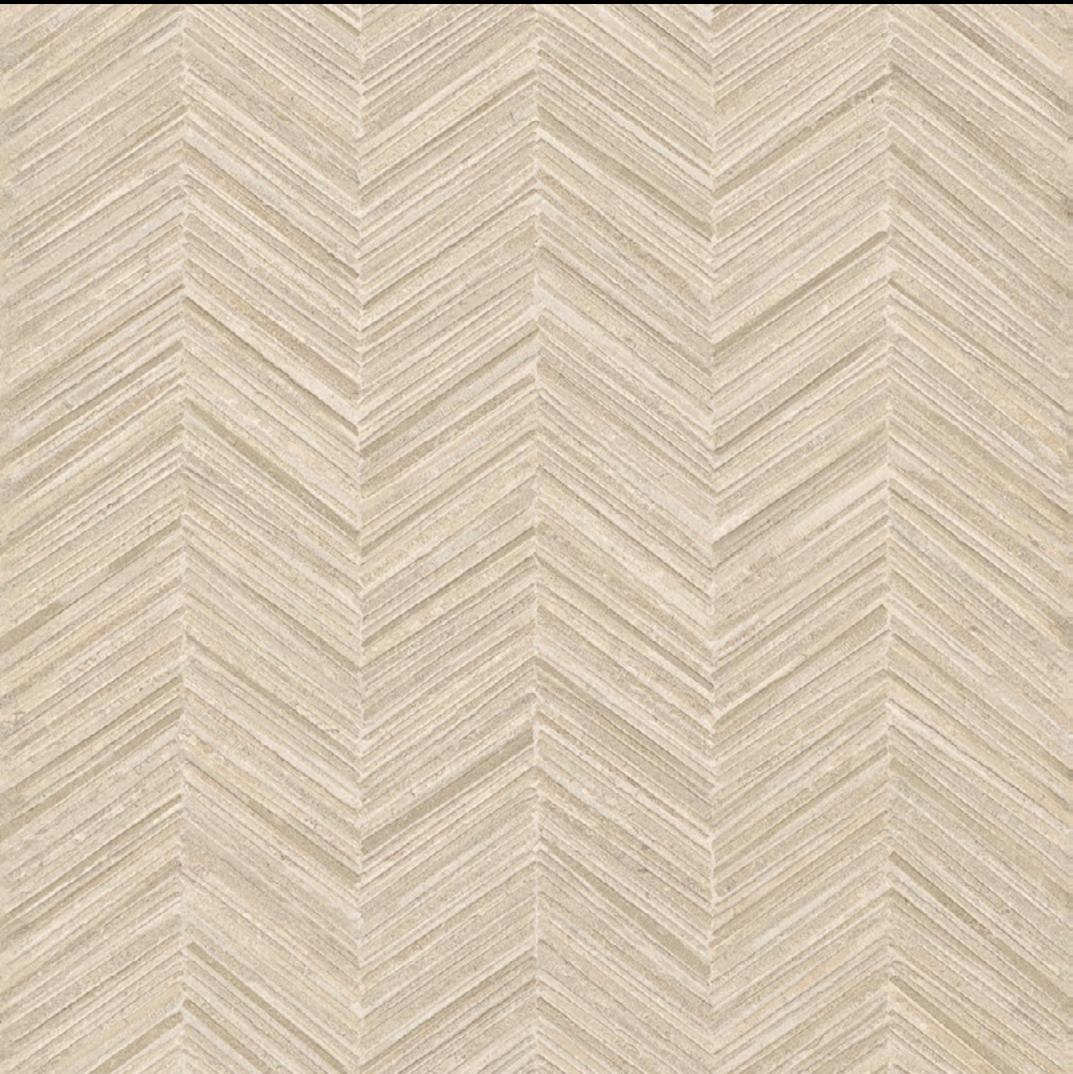
Size Guide (mm)



Decors



Calce Bianca – Ritmo



Grigio Calcare – Ritmo



Sabbia – Ritmo

Colour	Finish	Size (MM)	Decor
Dove Mix Dune Mix Pearl Mix	Natural	600 x 1200 x 9	Pointes

Special Pieces & Mosaic



Dove Mix – Brick Mosaic



Dune Mix – Brick Mosaic



Pearl Mix – Brick Mosaic

Colour	Finish	Size (MM)	Special Piece
Dove Mix Dune Mix Pearl Mix	Natural	300 x 300 x 9	Brick Mosaic

Special Pieces & Mosaic

Colour	Finish	Size (MM)	Special Piece
Minima Dove Minima Dune Minima Pearl Roccia Dove Roccia Dune Roccia Pearl	Natural	300 x 300 x 9	Mosaic (48x48mm)



Roccia Pearl – Mosaic



Roccia Dove – Mosaic



Roccia Dune – Mosaic



Minima Pearl – Mosaic



Minima Dove – Mosaic



Minima Dune – Mosaic



Provence - Pearl Mix

Provence - Dune Mix

Environmental Certification



LEED® certification provides independent, third party verification that a building project meets the highest green building and performance measure. All certified projects receive a LEED® plaque, which is nationally recognised symbol demonstrating that a building is environmentally responsible, profitable and a healthy place to live and work. The environmental characteristics have been evaluated and found according to the requirements of content of recycled material for environmental assessment according to LEED® criteria. These products contribute to the increase in the LEED® rating of buildings where they are used.



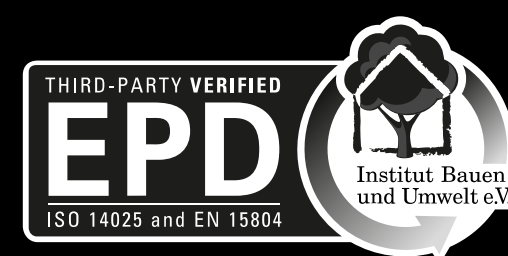
The EU Ecolabel helps you identify products and services that have a reduced environmental impact throughout their life cycle, from the extraction of raw material through to production, use and disposal. Recognised throughout Europe, EU Ecolabel is a voluntary label promoting environmental excellence which can be trusted. Ecolabel certification applies to building products such as ceramic tiles for residential and public flooring and wall-covering. The commission in charge of the certification system measures the environmental impact caused by the entire productive cycle; in the case of ceramic tiles, the verification starts from raw material quarrying through to manufacturing, distribution, installation and their final disposal. Our factories conform and are certified by the European Community standard Ecolabel and the production process is in complete harmony with the Ecolabel certification.



GREENGUARD Certification ensures that a product meets stringent standards for minimal emissions of volatile organic compounds (VOCs) into indoor air. This program provides assurance that products designed for indoor use adhere to strict chemical emissions limits, fostering the creation of healthier interiors. Manufacturers with GREENGUARD Certification gain credibility for their sustainability claims, supported by empirical technical data from an unbiased third-party organisation. The GREENGUARD Certification Program instills confidence by ensuring that indoor products meet strict chemical emissions limits, contributing to the creation of healthier interior spaces. This empowers manufacturers to produce and customers to identify products with low chemical emissions, thereby supporting air quality and environmental well-being.



NSF® has facilitated the development of more than 75 standards and protocols for sanitary food equipment, and has certified thousands of products as safe to use in restaurant and commercial kitchen settings. NSF® food equipment standards include requirements for material safety, design, construction and product performance. The products conform to the requirements of NSF/ANSI Standard 51 – Food Equipment Materials. NSF/ANSI 51 establishes minimum public health and sanitation requirements for materials and finishes used in the manufacture of commercial foodservice equipment.



An Environmental Product Declaration (EPD) is a concise document that transparently communicates the environmental performance of a product throughout its life cycle. It provides comprehensive information about the product's environmental impact, including aspects such as raw material extraction, production processes, energy consumption, and emissions. EPDs are based on standardised methodologies and enable consumers, businesses, and policymakers to make informed decisions by considering the environmental aspects of a product in a systematic and comparable way.

P O R C E L A I N T I L E S

North London Showroom
23 Temple Fortune Parade
Finchley Road
London NW11 0QS
020 3141 3337

www.porcelaintiles.co.uk

South London Showroom
88 High Street Wimbledon
London SW19 5EG
020 3141 3337

enquiry@porcelaintiles.co.uk